



**WFC2015**  
XIV World Forestry Congress

*Forests and People: Investing in a Sustainable Future*

7-11 SEPTEMBER 2015 Durban | South Africa

# NFI-component of a NFMS

Suriname

FOUNDATION FOR FOREST MANGEMENT AND PRODUCTION CONTROL- S. Crabbe

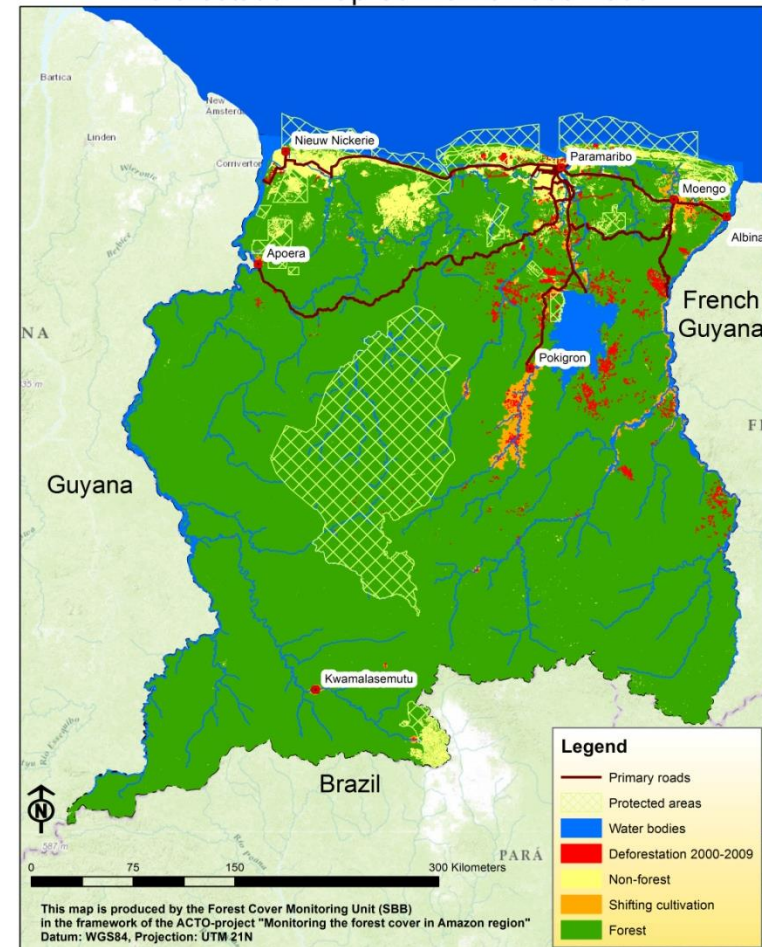


# Country situation: Suriname

- Land surface: 163.800 km<sup>2</sup>
- Forest cover: ca. 94%
- Protected: ca. 13,3%
- Deforestation: 0,02-0,06%
- Production forest: 45.000 km<sup>2</sup>
- # Inhabitants: ca. 500.000
- # Languages: 21



Deforestation map Suriname 2000-2009



# NFMS- existing frameworks

- Forest management Act (1992)
- National forest policy (2003)
- Interim strategic action plan (2009)
- Roadmap for National Land Use Planning (2015)
- Approval of the R-PP by the Worldbank (2013)
- South- south collaborations: Amazon Cooperation Treaty Organization
- International conventions ratified by Suriname: CBD, UNFCCC
- Etc.



# NFMS-Initial situation

Pilot National  
Forest Inventory  
(SBB & Anrica)

Established GIS  
monitoring of  
logging activities

Satellite forest  
monitoring (ACTO-  
project)

REDD+ for the  
Guiana shield  
project

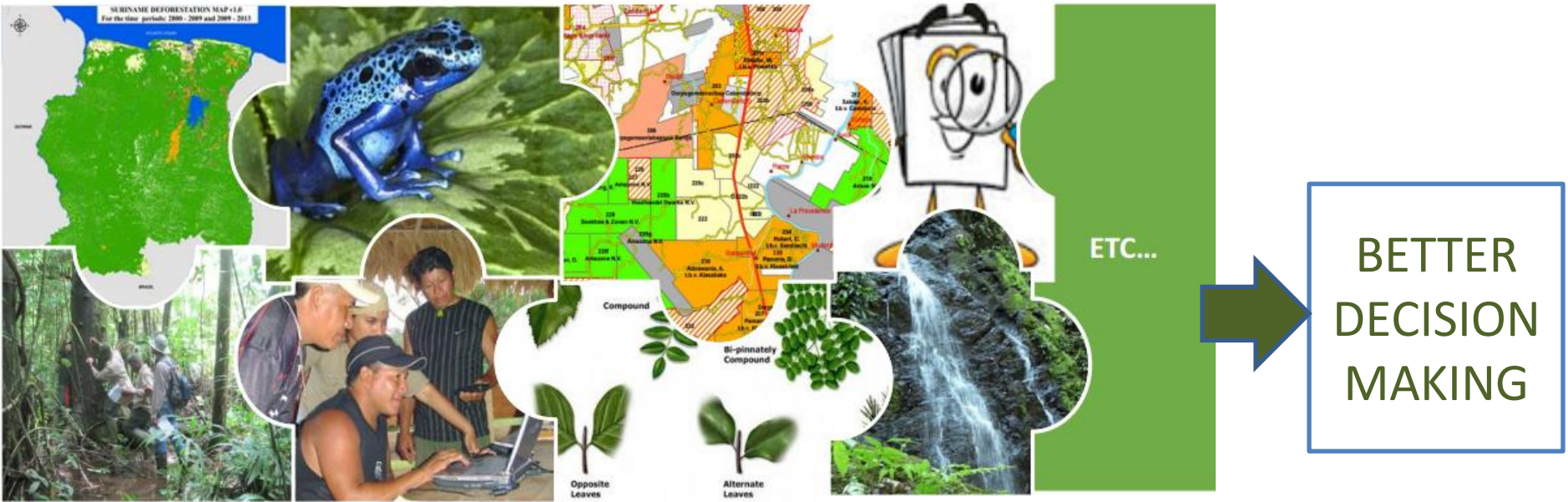
RPP  
approved  
21/3/13

Regional  
project on  
avoided  
deforestation  
(KfW)

NGO's doing  
monitoring projects  
with communities



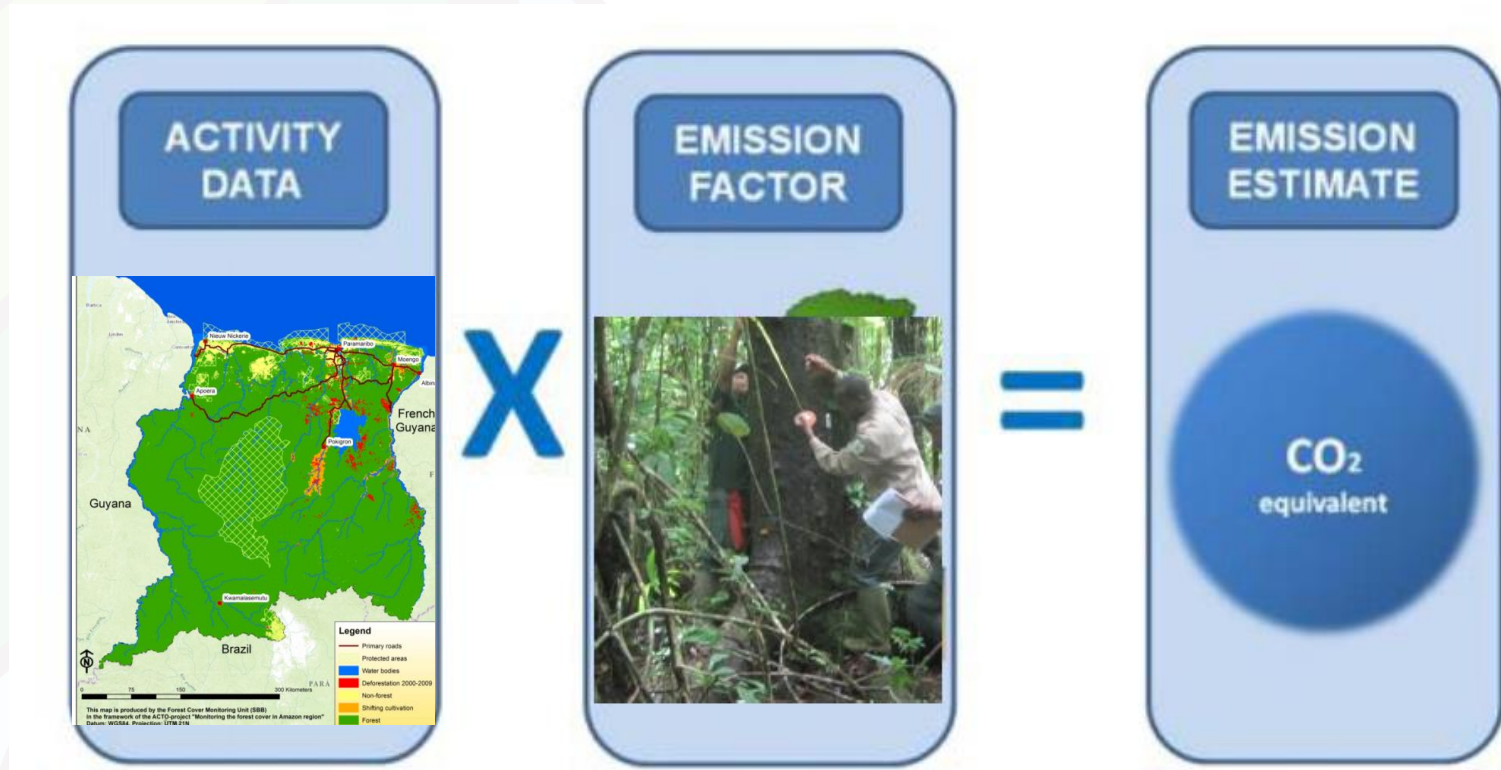
# NFMS- Final objective



- Standard definitions to improve consistency
- Data and information sharing stimulated with protocols and platform
- Stimulated scientific research & involvement of communities
- Strengthened institutional capacities and collaboration
- Identification of priority projects and deliver concrete outputs



# NFMS/ MRV-component



# NFMS/ MRV-component



## Satellite Land Monitoring System:

- Unit established in 2012 and fully operational
- Capacity strengthened of local team
- Strong link with two regional projects:
  - “Monitoring the forest cover in the Amazon region” (coordinated by ACTO)
  - REDD+ for the Guiana Shield (coordinated by ONFi-reddguianashield.com)
- Specific outputs delivered:
  - Forest cover maps for 2000-2009-2013
  - Baseline study on impact of gold mining on deforestation and freshwater
  - Ongoing mapping of infrastructure
  - Ongoing preparations of a LULCmap



# NFMS/ MRV-component

## EMISSION FACTOR



### Emission factors:

- Will be determined based on a National Forest Inventory → provides broader spectrum of information (for land/forest use planning and forest management)
- Accessibility is a major challenge
- Innovative technologies could be used in the NFI if applicable

### Other subprojects need to take place:

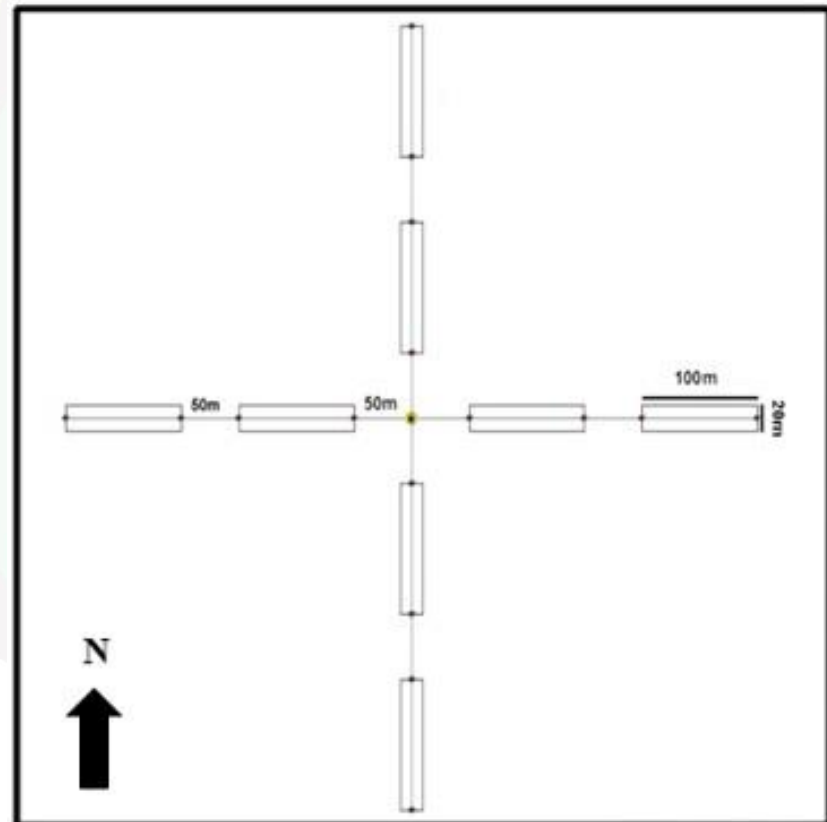
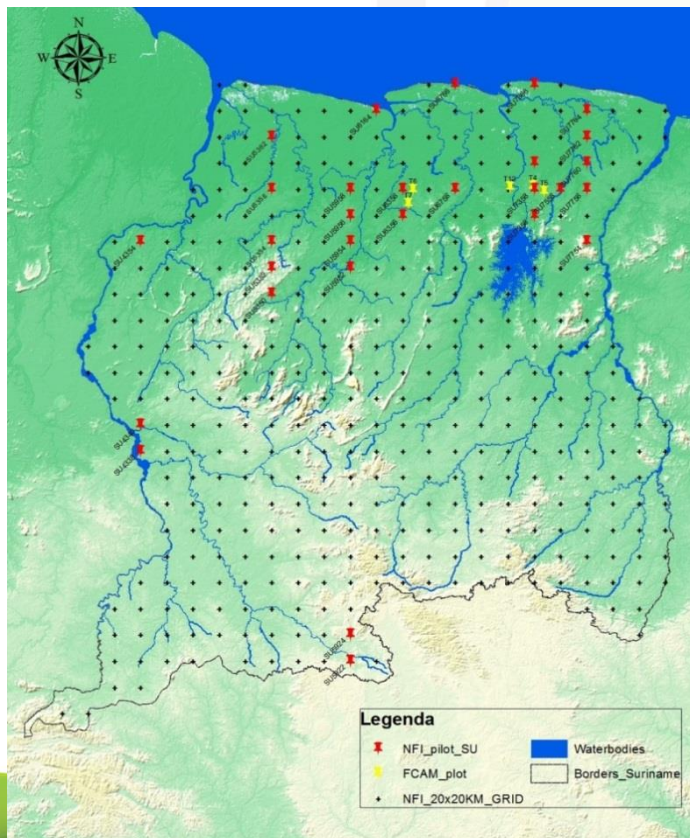
- Assessment of available allometric equations
- Improvement of the tree identifications procedures





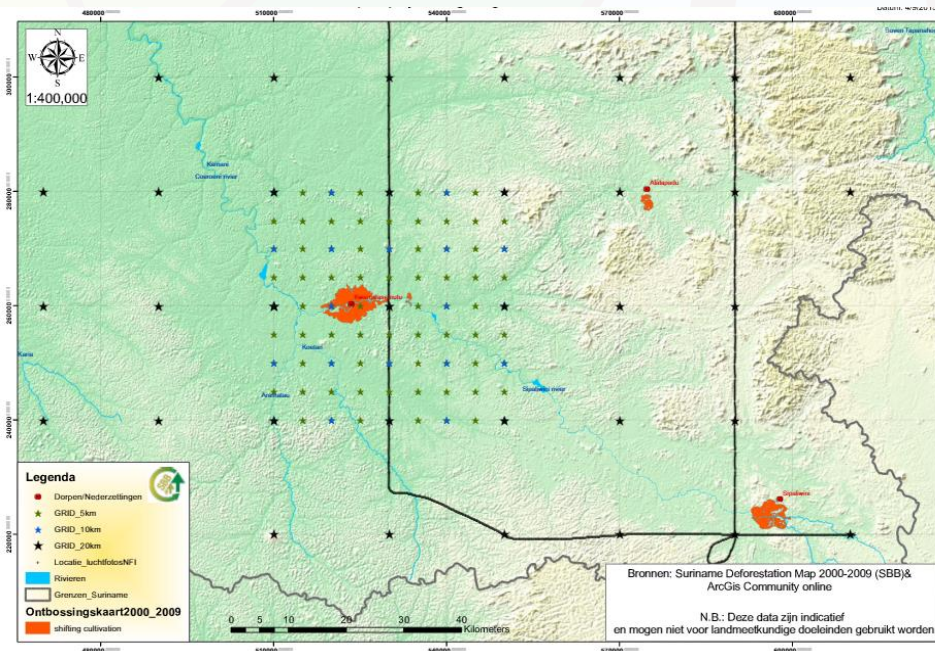
# Basic concepts applied during pilot NFI project

- Robust approach (GRID-design), adjustable to local questions
- Plot design based on known national plot design, but also aligned with regional experiences



# Basic concepts applied during pilot NFI project

- Involvement of local communities in the field work if the gridpoints are close by their village (cMRV-inclusion extra info)
- Sampling intensity could be aligned with REDD+ strategy



# Activities carried out within the pilot NFI project

- Formulation of field protocol
- Capacity of two field teams strengthened
- Pilot on how communities can be involved within this activity (Indigenous Park Guards)
- In total data for 30 SU's on the national GRID was collected
- Capacity built on how to organise a NFI
- Collaboration with research institute strengthened
- Collaboration with ANRICA to test innovative technology



# Next steps

- Roadmap towards a NFMS
- Review of the results achieved with the tested technology
- Design of the full scale NFI (stratification, parameters to measure, ....)
- Project proposal for full scale NFI and fundraising
- Continue to build capacity
- Regional study on Tree Species identification
- Regional study on allometric equations



A scenic view of a river with rapids and a forested background. The water is turbulent and white with foam as it flows over rocks. The background is a dense green forest under a cloudy sky.

# Thank you for your attention!

More information:

SBB: [sbbsur@sr.net](mailto:sbbsur@sr.net)

Website SBB: [www.sbbsur.com](http://www.sbbsur.com)

Website regional project: [reddguianashield.com](http://reddguianashield.com)

My e-mail: [sarah\\_crabbe@yahoo.com](mailto:sarah_crabbe@yahoo.com)

